

WHY DO SOME MEN USE VIOLENCE AGAINST WOMEN AND HOW CAN WE PREVENT IT?

QUANTITATIVE FINDINGS FROM THE UNITED NATIONS MULTI-COUNTRY STUDY
ON MEN AND VIOLENCE IN ASIA AND THE PACIFIC



*Empowered lives.
Resilient nations.*



United Nations Entity for Gender Equality
and the Empowerment of Women



PARTNERS FOR PREVENTION. A UNDP, UNFPA, UN WOMEN AND UNV REGIONAL JOINT PROGRAMME FOR GENDER-BASED VIOLENCE PREVENTION IN ASIA AND THE PACIFIC

THE STUDY

THE STUDY

STUDY AIM: to deepen the understanding of men's use of violence against women in order to prevent it

6

COUNTRIES

Bangladesh
Cambodia
China
Indonesia
Papua New Guinea
Sri Lanka

9

SITES

10,178

MEN AGED 18-49

3,106

**WOMEN FOR
VALIDATION**

**Largest cross-country
comparable dataset on
male perpetration of
violence against women
in Asia-Pacific**

WHERE DID WE CONDUCT THE STUDY?



**Multi-stage
representative
sample**

**Representative
of men aged
18-49 year in
selected sites**

**Not nationally
representative
(except
Cambodia)**

**Does not
represent the
whole Asia-
Pacific region**

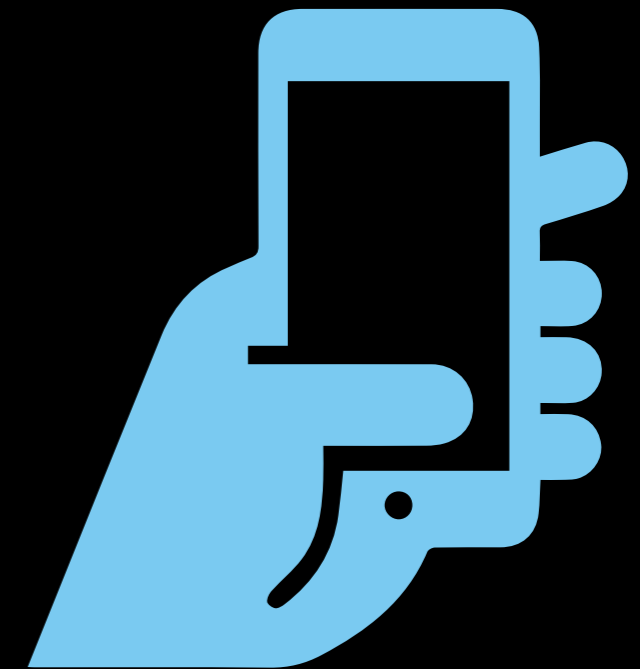
HOW DID WE CONDUCT THE STUDY?

Population-based quantitative household surveys

Men interviewed men,
women interviewed
women

Followed rigorous
international ethical
and safety standards
for research on VAW

Standardized
structured
questionnaire on men's
use and experiences of
violence, attitudes and
practices, childhood,
sexuality, and health



iPod Touch devices
allowed men to answer
questions about
rape perpetration
anonymously

HOW DID WE MEASURE MEN'S USE OF VIOLENCE?

PHYSICAL PARTNER VIOLENCE PERPETRATION

- slapped or threw something at partner
- pushed or shoved
- hit with fist
- kicked, dragged, beat, choked or burned
- threatened to use or used gun, knife or other weapon

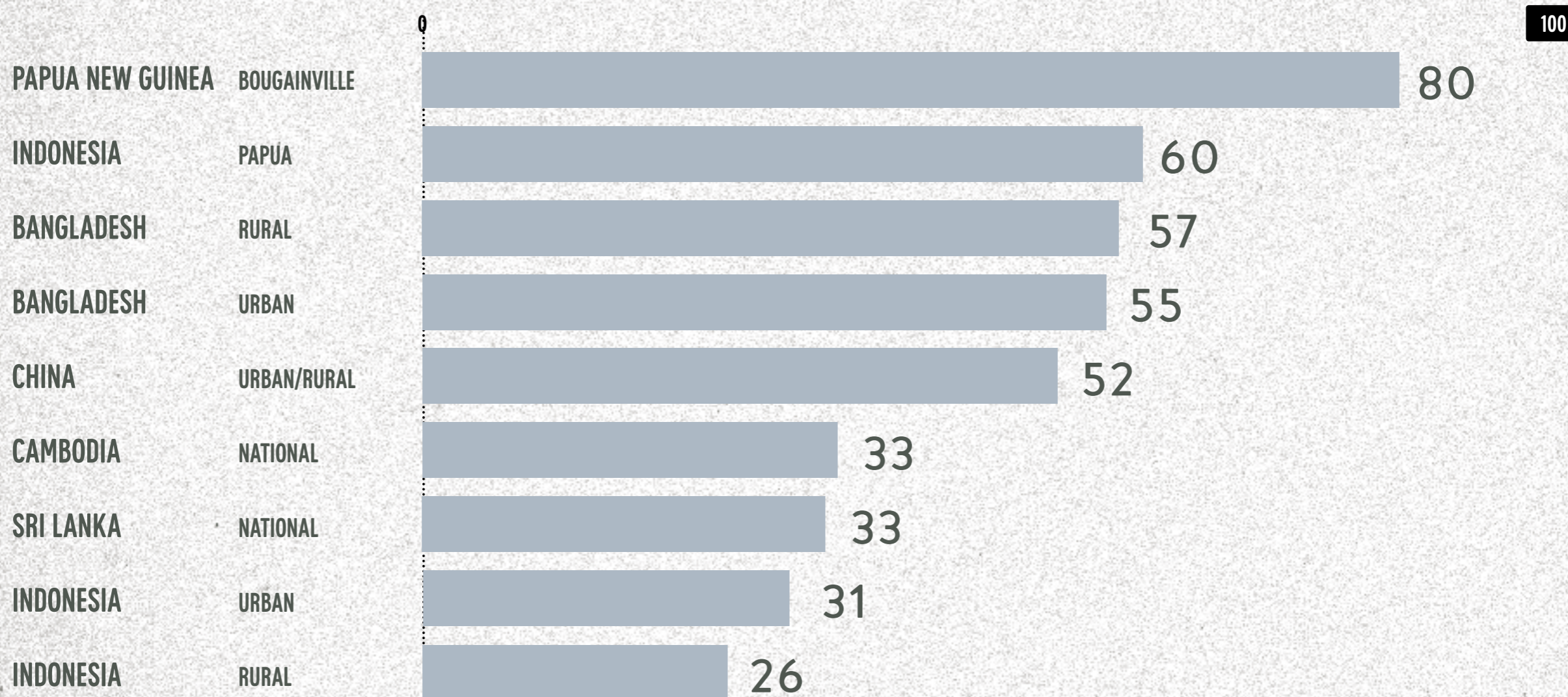
NON-PARTNER RAPE PERPETRATION

- forced her to have sexual intercourse against her will
- had sex with woman or girl when she was too drunk or drugged to say whether she wanted it or not

THE PROBLEM

THE PROBLEM: INTIMATE PARTNER VIOLENCE

PERCENTAGE OF EVER-PARTNERED MEN REPORTING PERPETRATION OF PHYSICAL AND/OR SEXUAL INTIMATE PARTNER VIOLENCE, BY SITE

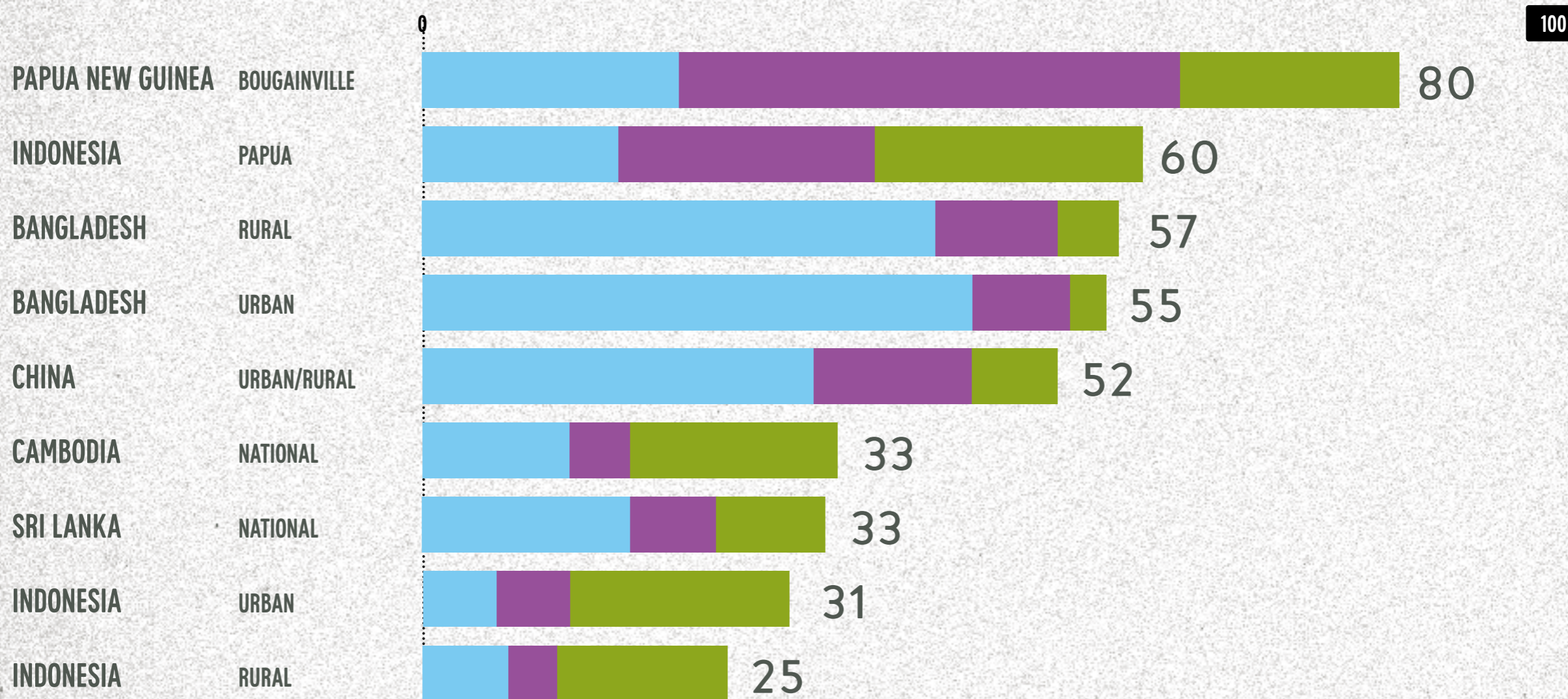


Overall, 1 in 2 ever-partnered men reported perpetrating partner violence, but prevalence rates varied widely across sites

THE PROBLEM: INTIMATE PARTNER VIOLENCE

PERCENTAGE OF EVER-PARTNERED MEN REPORTING PERPETRATION OF PHYSICAL AND/OR SEXUAL INTIMATE PARTNER VIOLENCE, BY SITE

● PHYSICAL VIOLENCE ONLY ● BOTH PHYSICAL AND SEXUAL VIOLENCE ● SEXUAL VIOLENCE ONLY

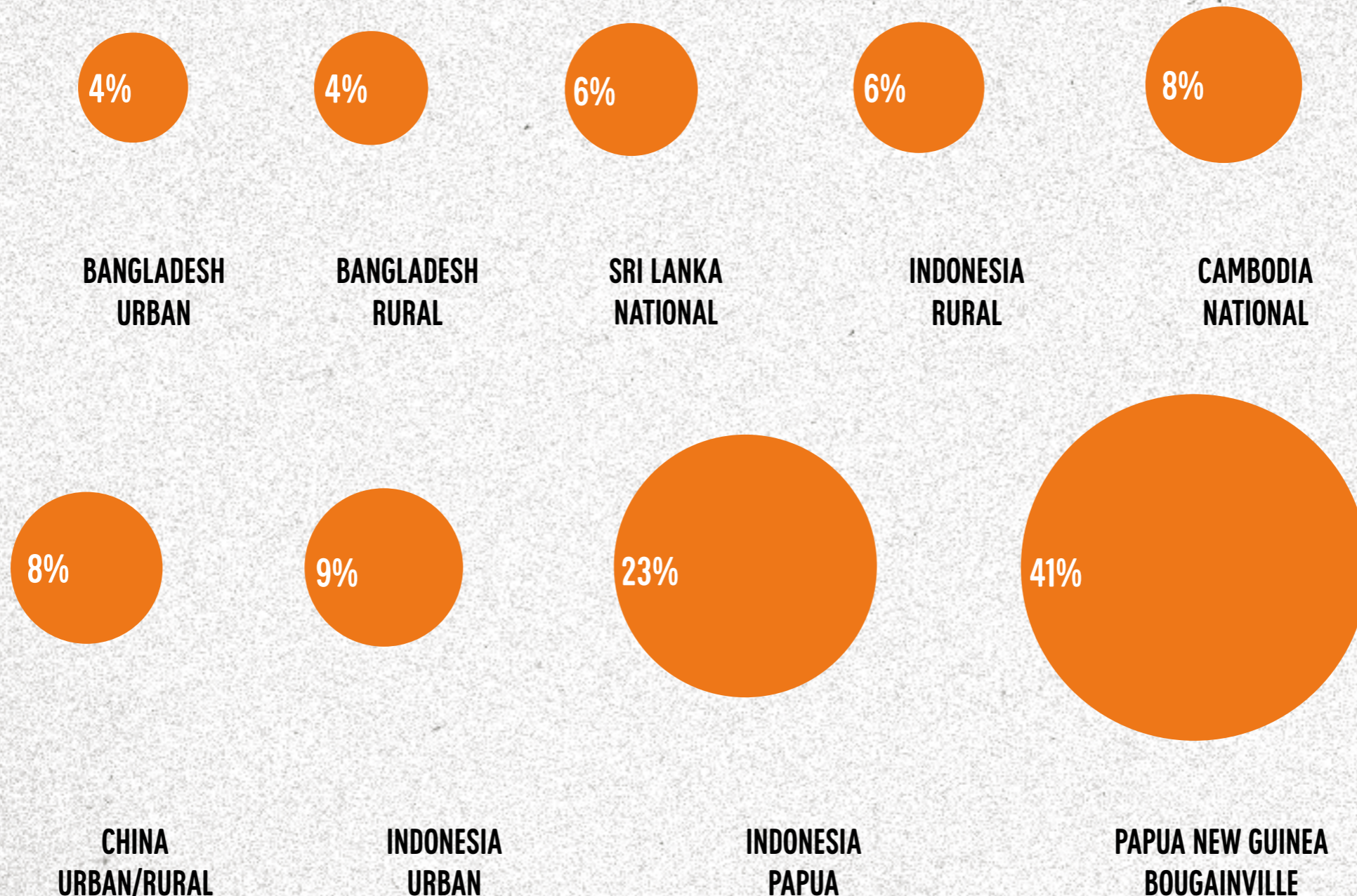


Patterns of partner violence also varied across sites

THE PROBLEM: RAPE

PERCENTAGE OF MEN REPORTING PERPETRATION OF RAPE AGAINST A WOMAN OR GIRL, BY TYPE AND SITE

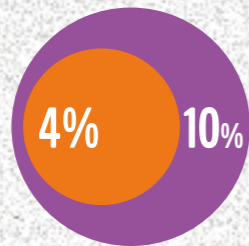
● RAPE OF A NON-PARTNER



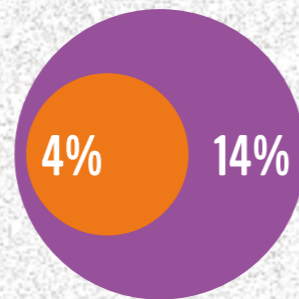
THE PROBLEM: RAPE

PERCENTAGE OF MEN REPORTING PERPETRATION OF RAPE AGAINST A WOMAN OR GIRL, BY TYPE AND SITE

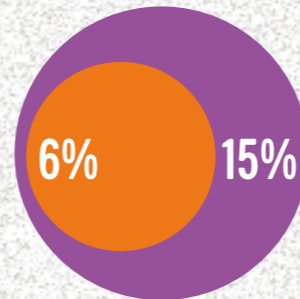
● RAPE OF A NON-PARTNER ● ANY RAPE OF A PARTNER OR NON-PARTNER



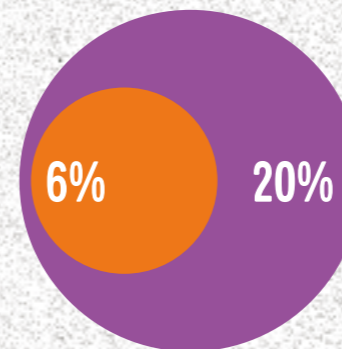
BANGLADESH
URBAN



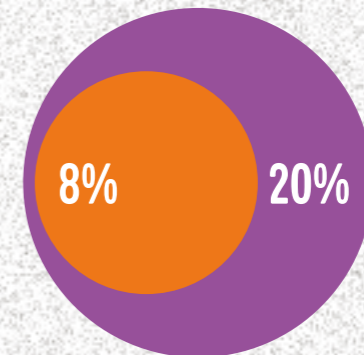
BANGLADESH
RURAL



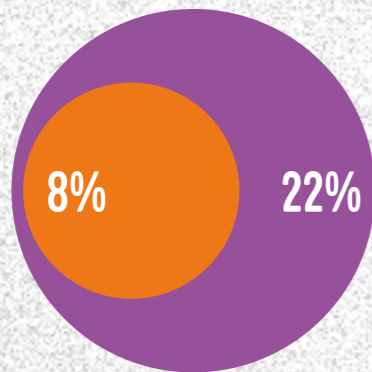
SRI LANKA
NATIONAL



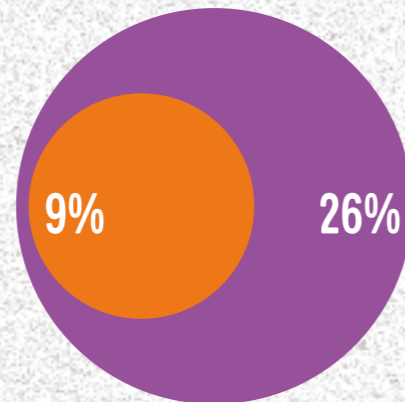
INDONESIA
RURAL



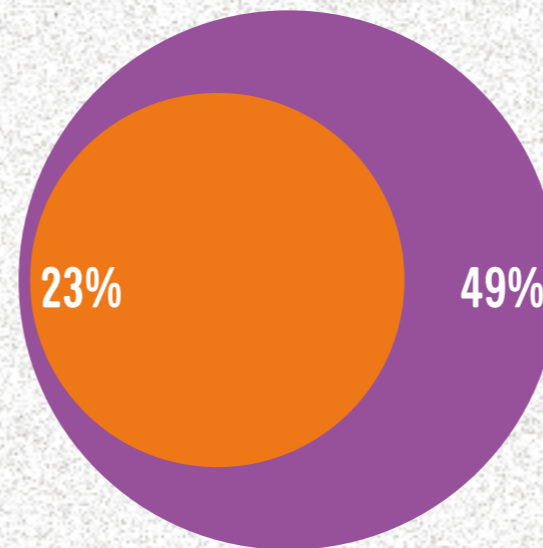
CAMBODIA
NATIONAL



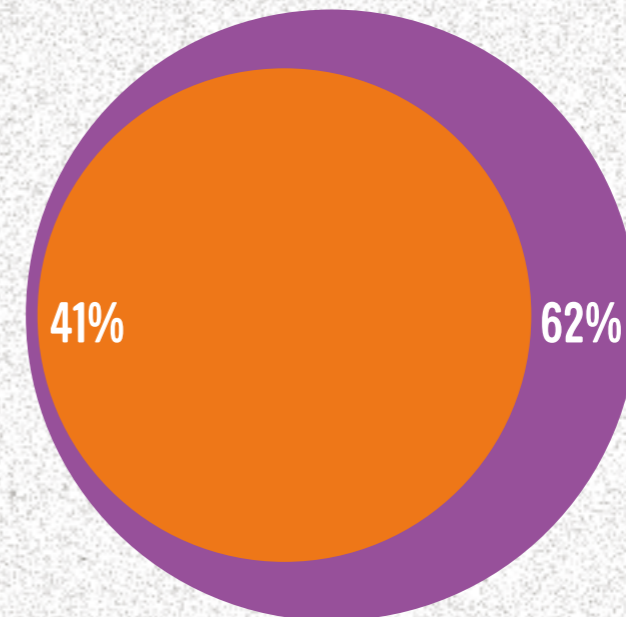
CHINA
URBAN/RURAL



INDONESIA
URBAN



INDONESIA
PAPUA



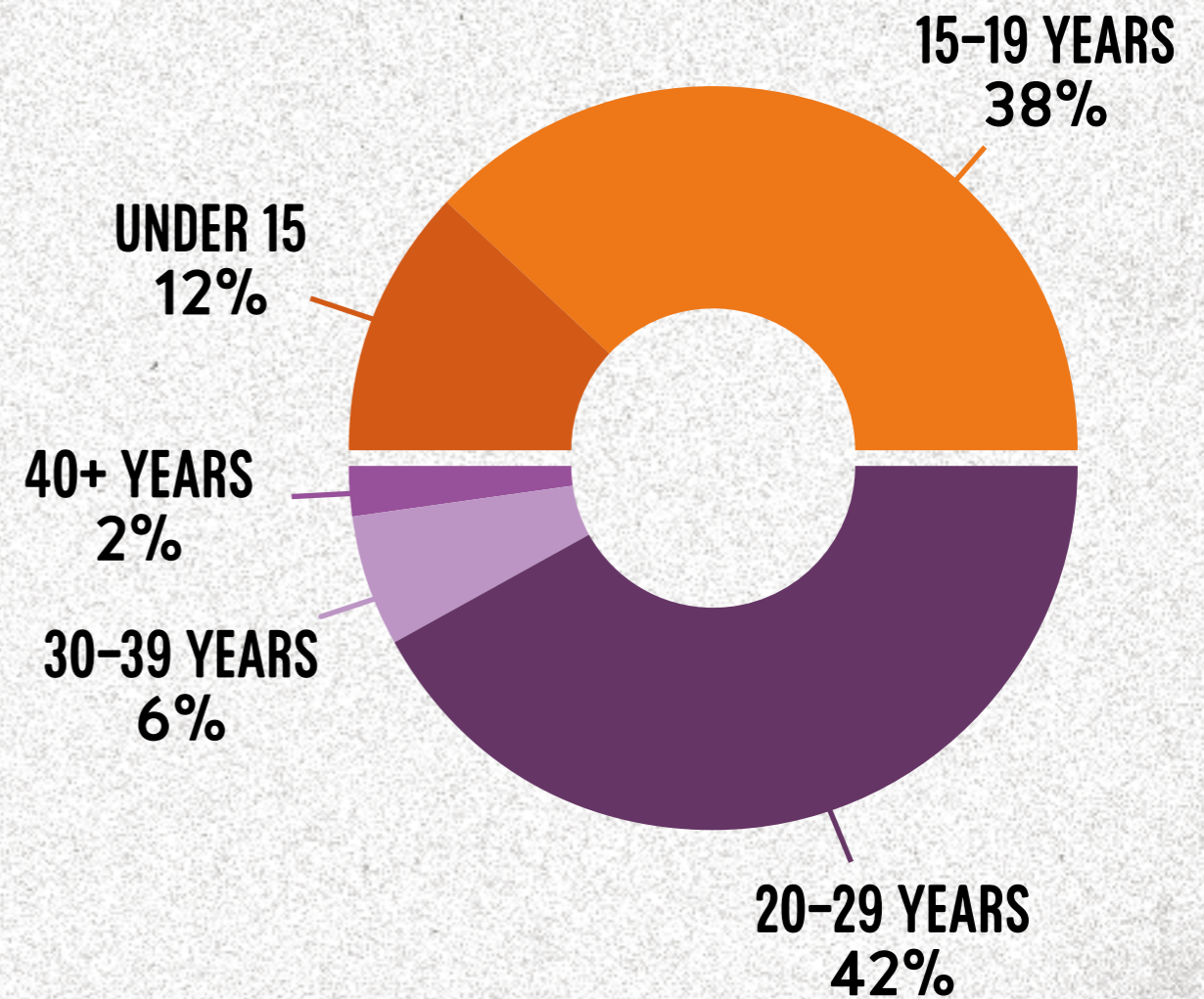
PAPUA NEW GUINEA
BOUGAINVILLE

RAPE PERPETRATION STARTED EARLY IN LIFE



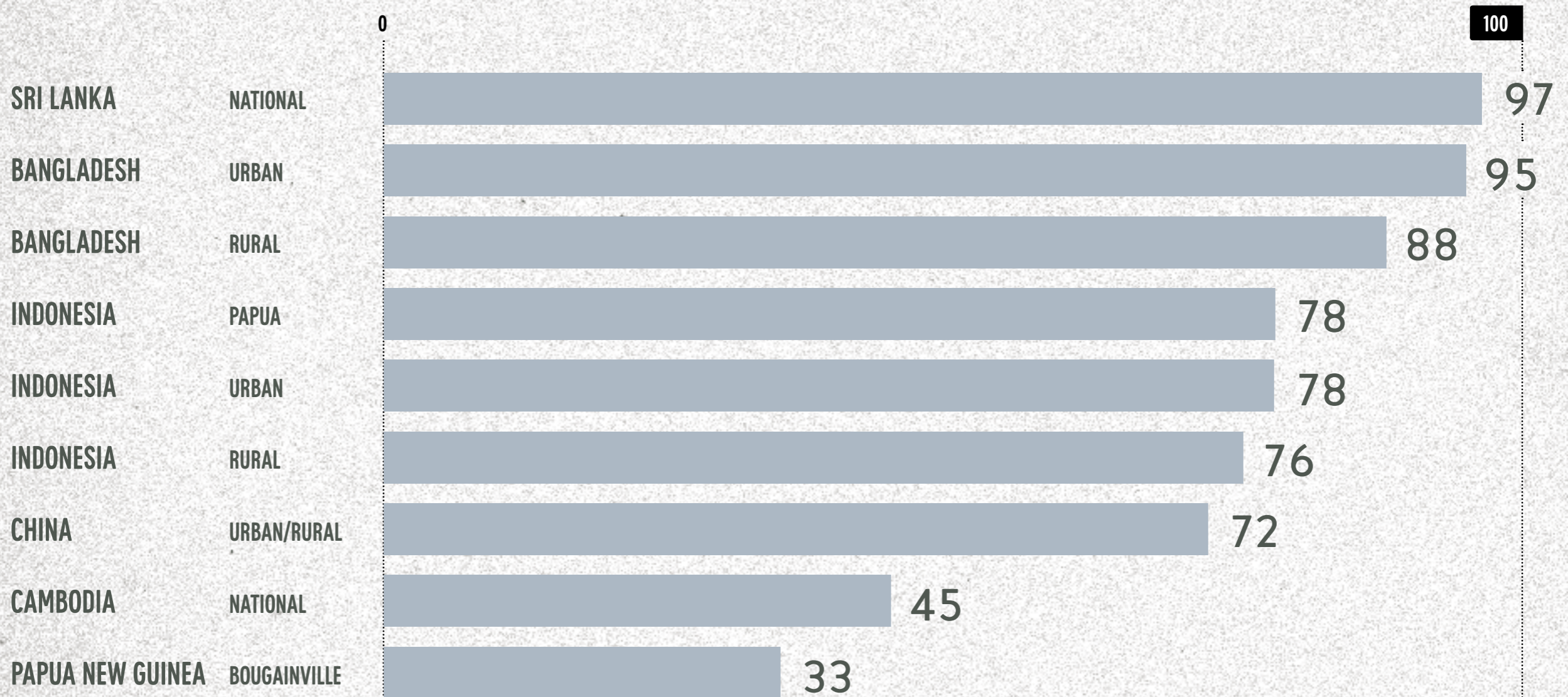
Half of all men who had perpetrated rape did so for the first time when they were teenagers (younger than 20 years)

AGE OF FIRST RAPE PERPETRATION AMONG MEN WHO REPORTED EVER PERPETRATING RAPE AGAINST A WOMAN OR GIRL (PARTNER OR NON-PARTNER)



LEGAL CONSEQUENCES OF RAPE PERPETRATION

PERCENTAGE OF MEN WHO REPORTED PERPETRATING RAPE BUT REPORTED THAT THEY HAD NOT BEEN ARRESTED OR JAILED AS A CONSEQUENCE, BY SITE



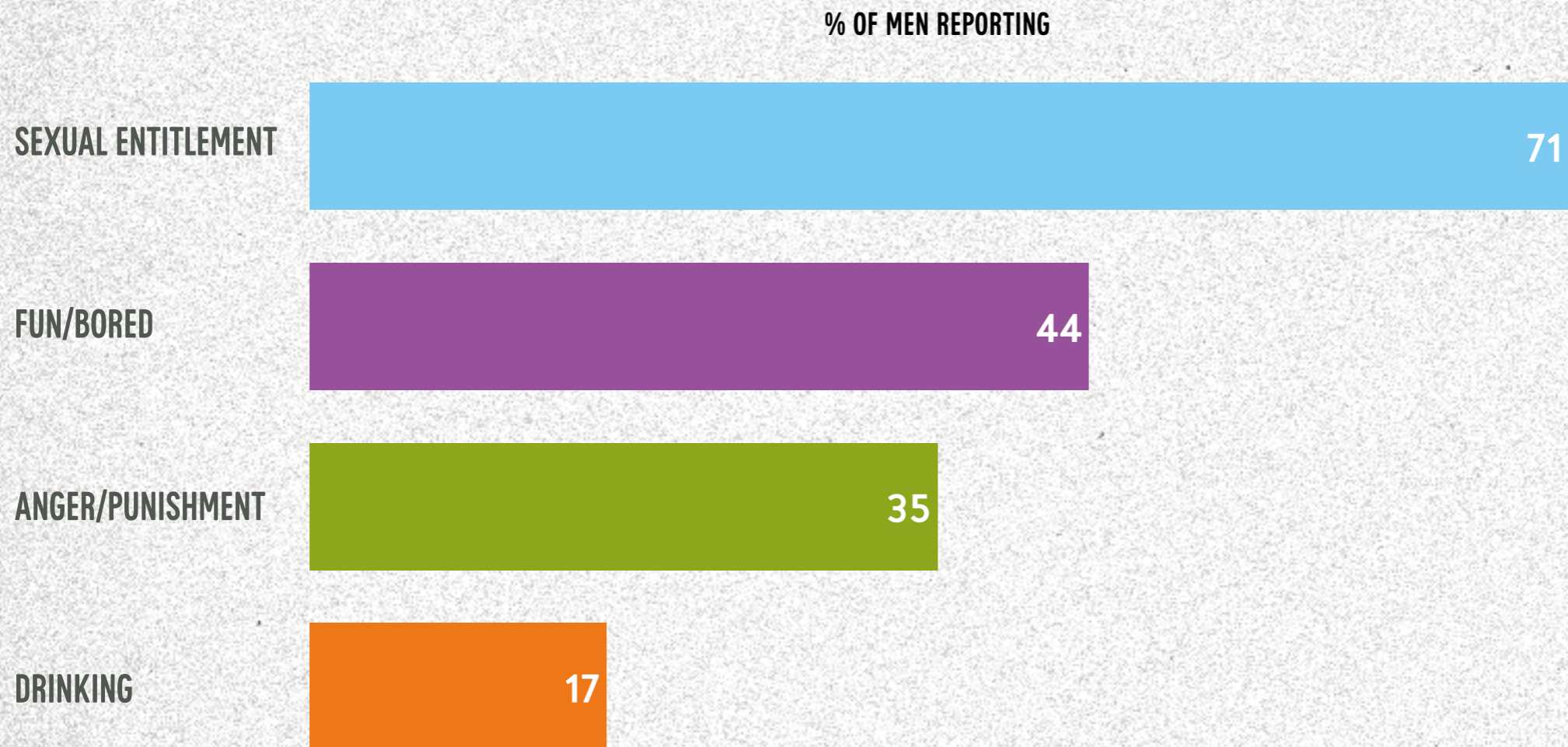
Majority of men who admitted to perpetrating rape did not experience any legal consequences

DRIVERS OF MEN'S USE OF

VIOLENCE AGAINST WOMEN

WHY DO SOME MEN PERPETRATE RAPE?

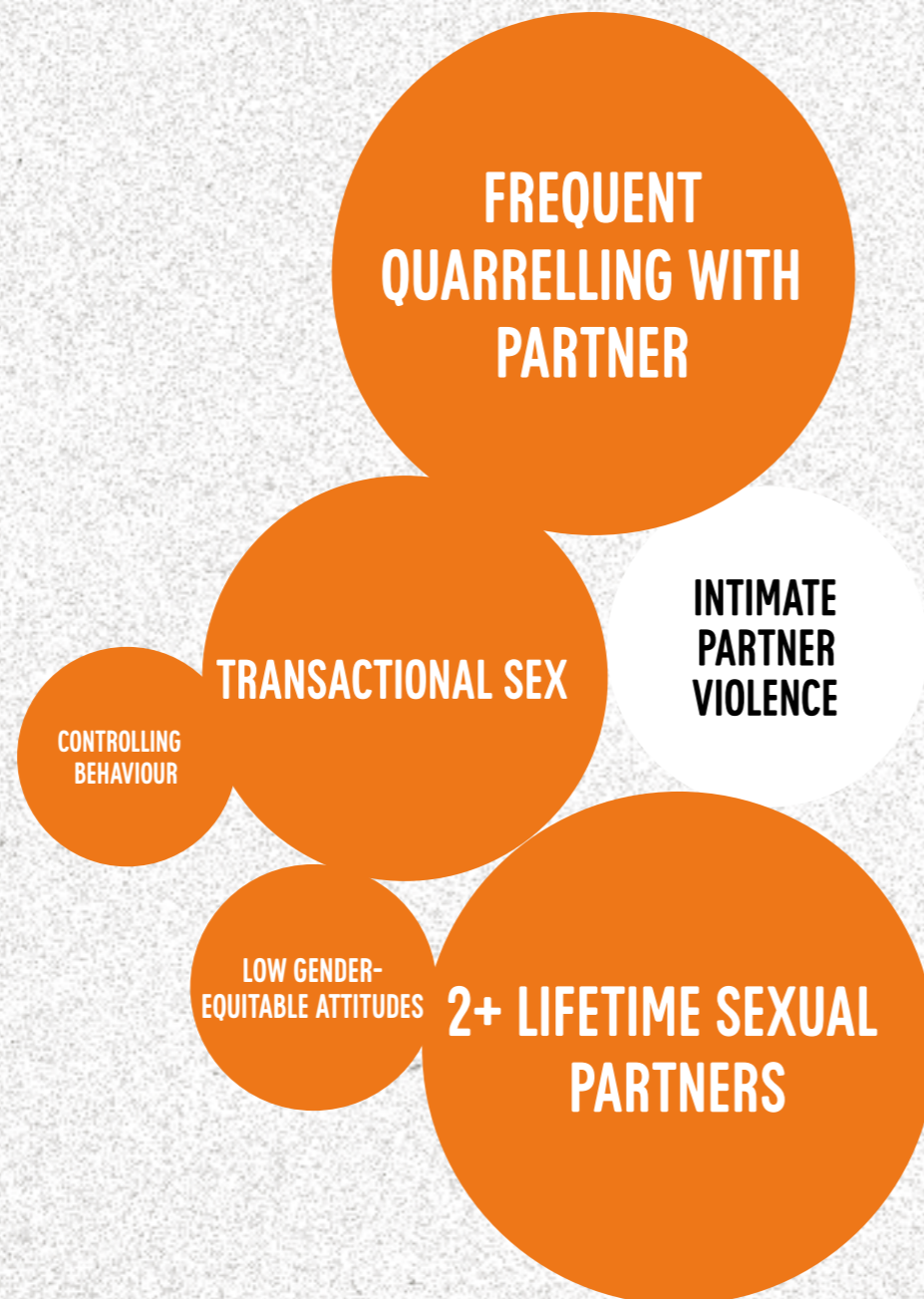
MOTIVATIONS FOR RAPE, BY MEN WHO REPORTED EVER RAPING ANY WOMAN OR GIRL, INCLUDING PARTNERS AND NON-PARTNERS



The most commonly reported motivation for perpetrating rape across sites was related to men's sense of sexual entitlement

FACTORS ASSOCIATED WITH MEN'S

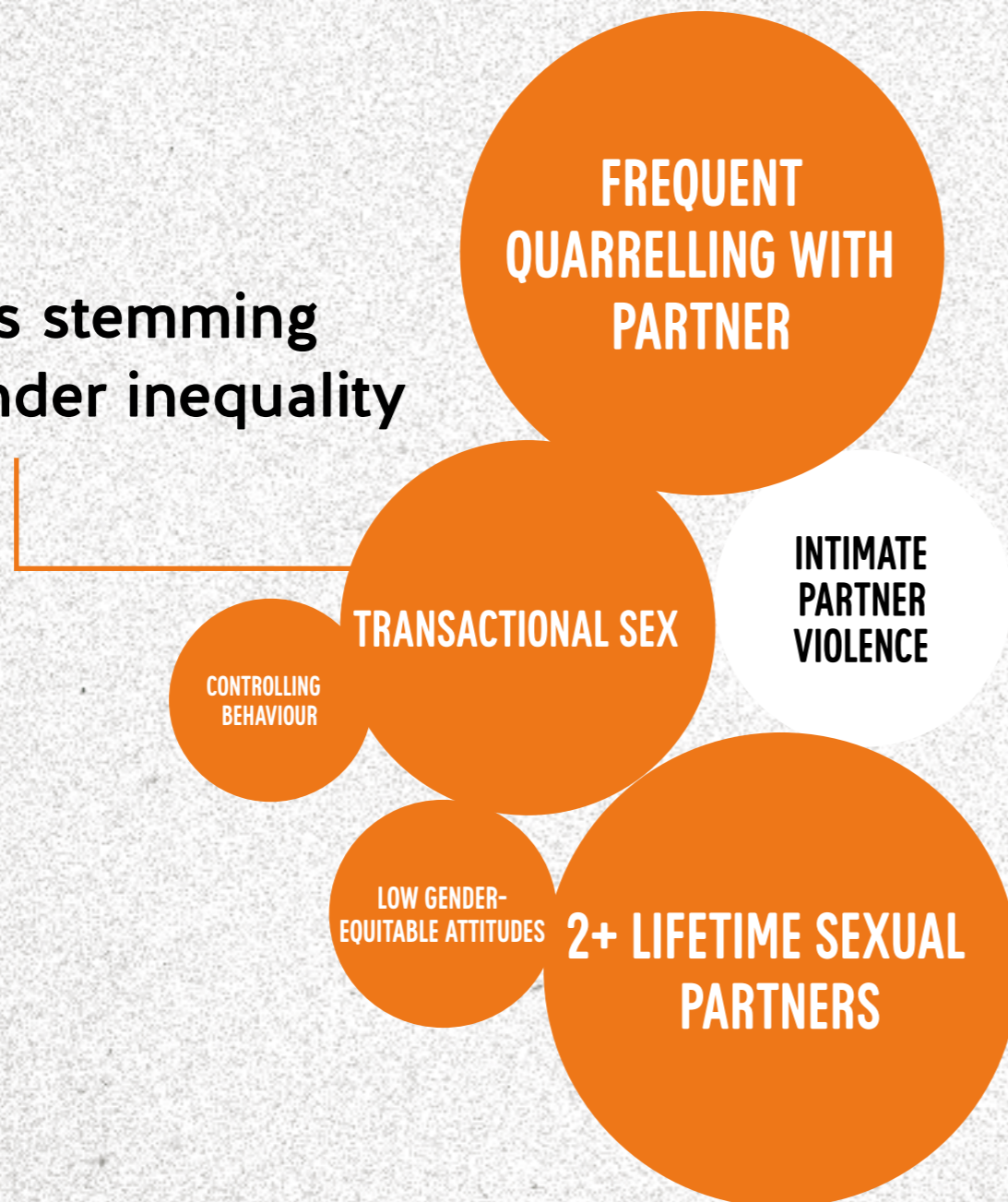
PERPETRATION OF INTIMATE PARTNER VIOLENCE



FACTORS ASSOCIATED WITH MEN'S

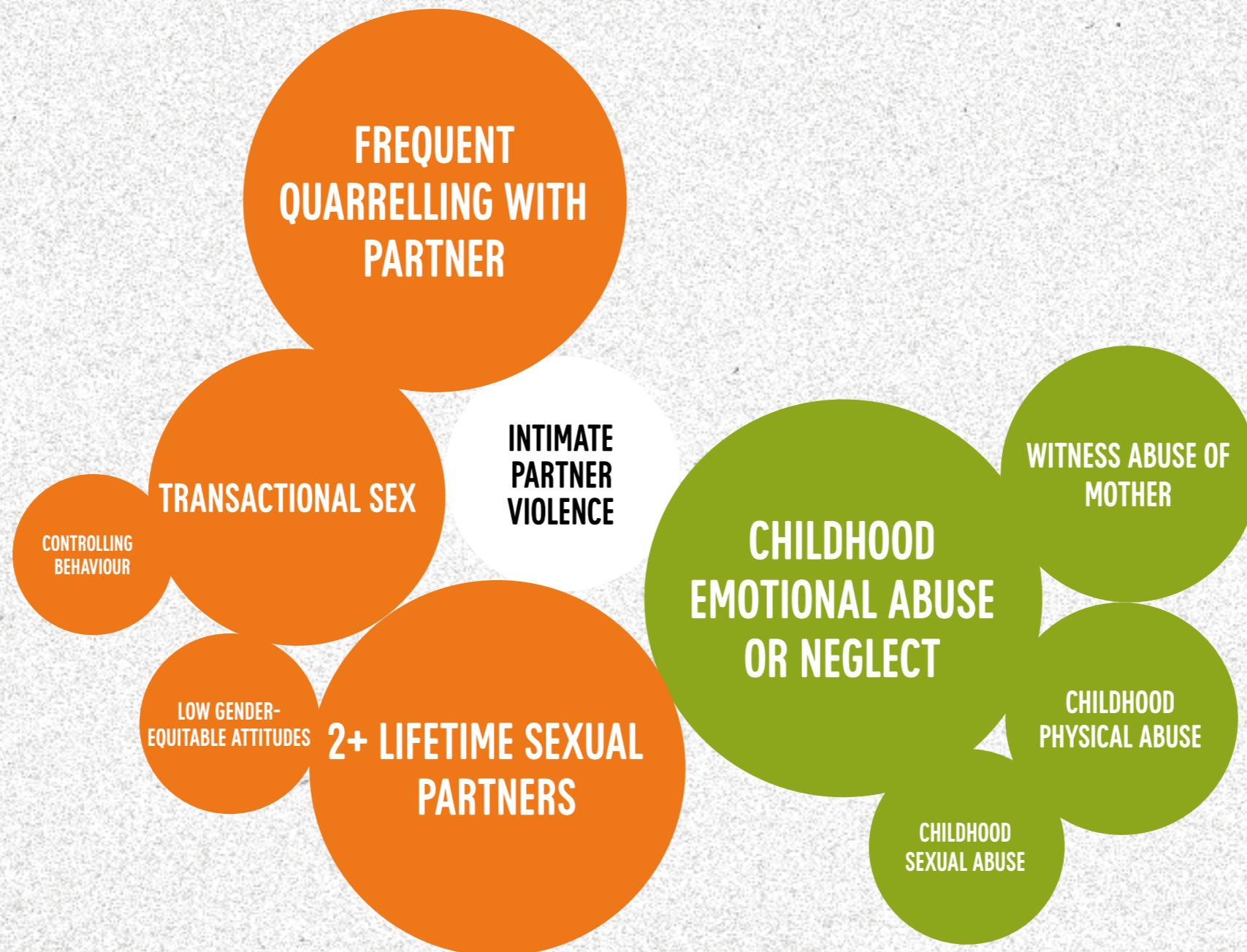
PERPETRATION OF INTIMATE PARTNER VIOLENCE

Practices stemming
from gender inequality



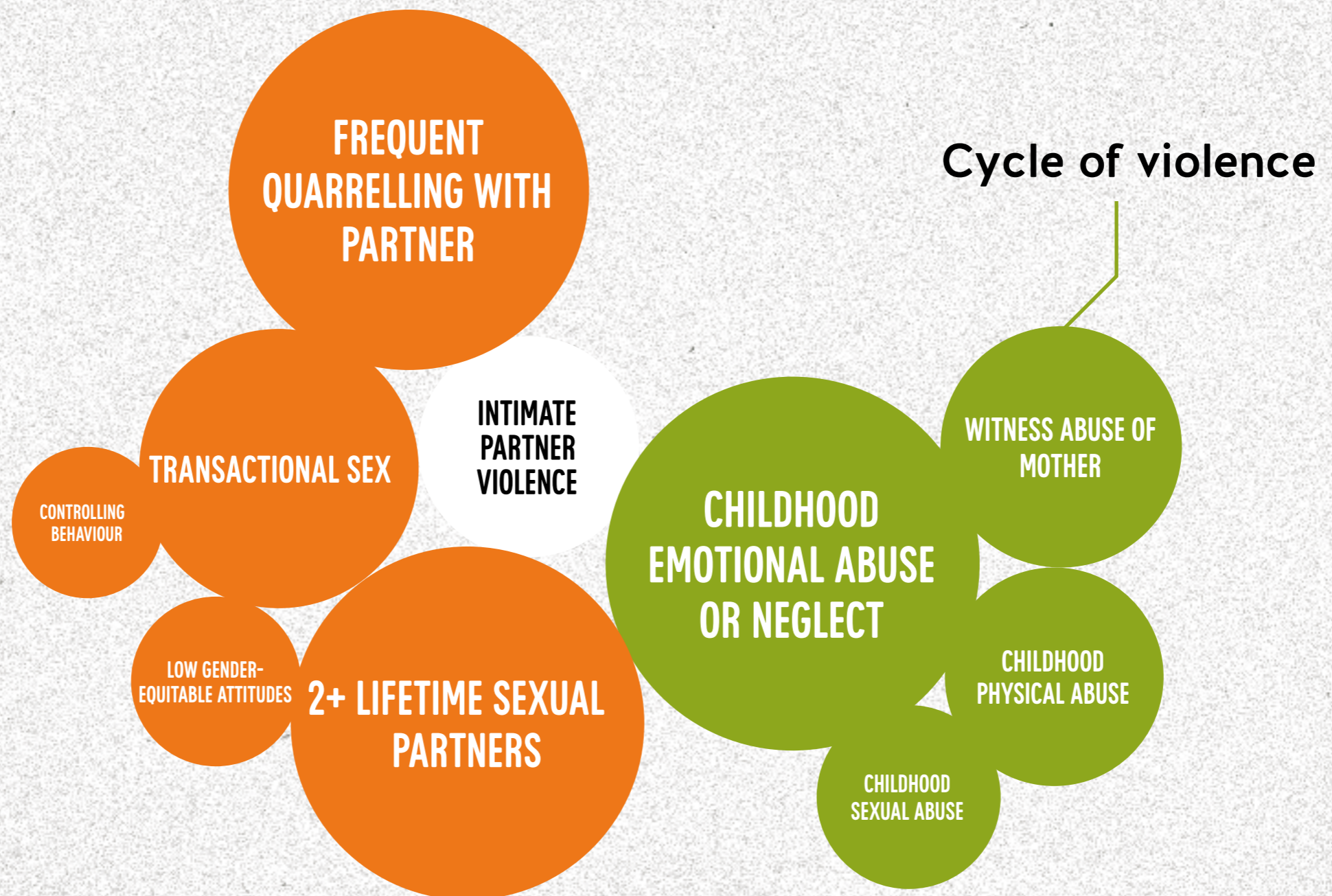
FACTORS ASSOCIATED WITH MEN'S

PERPETRATION OF INTIMATE PARTNER VIOLENCE



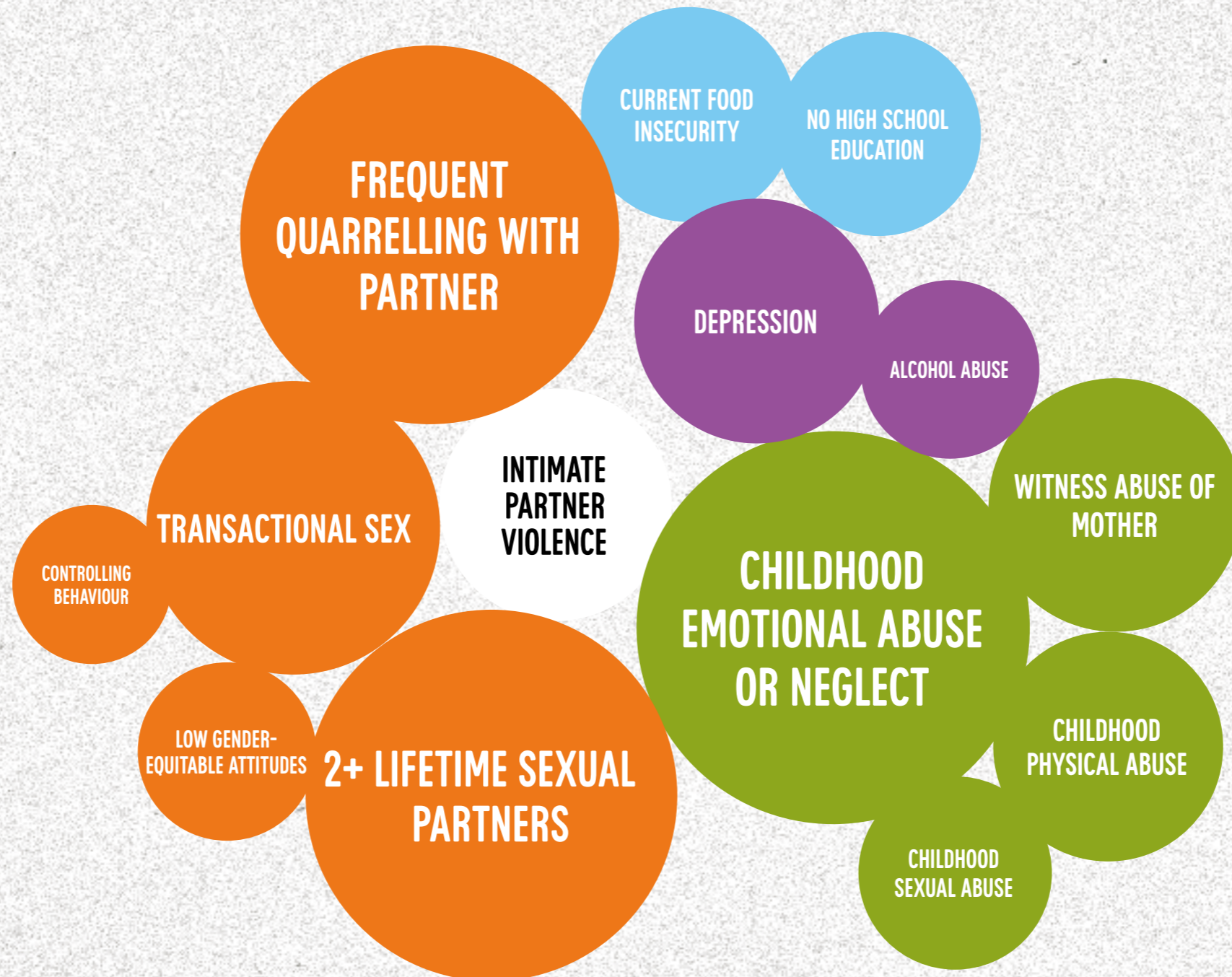
FACTORS ASSOCIATED WITH MEN'S

PERPETRATION OF INTIMATE PARTNER VIOLENCE



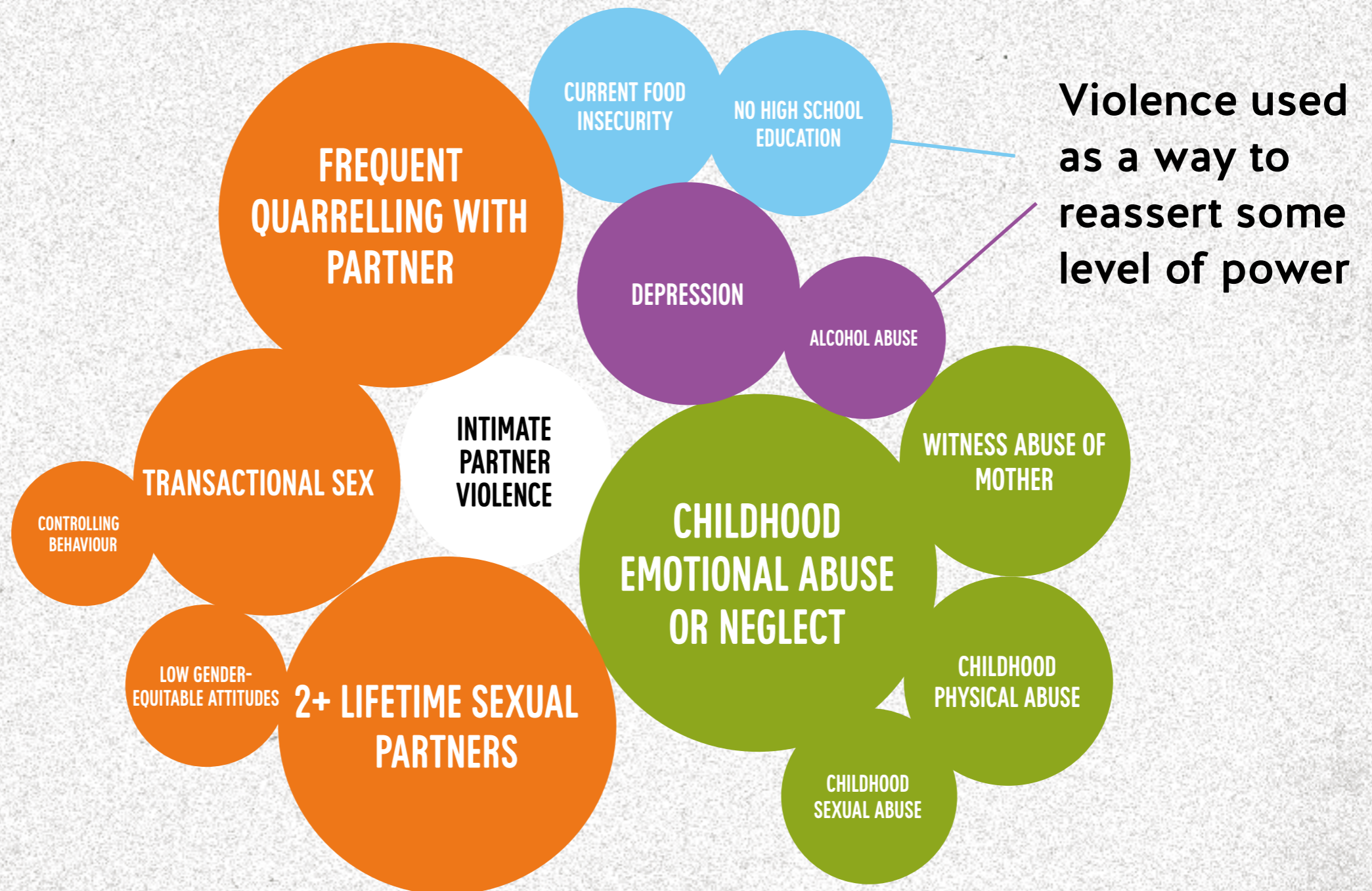
FACTORS ASSOCIATED WITH MEN'S

PERPETRATION OF INTIMATE PARTNER VIOLENCE



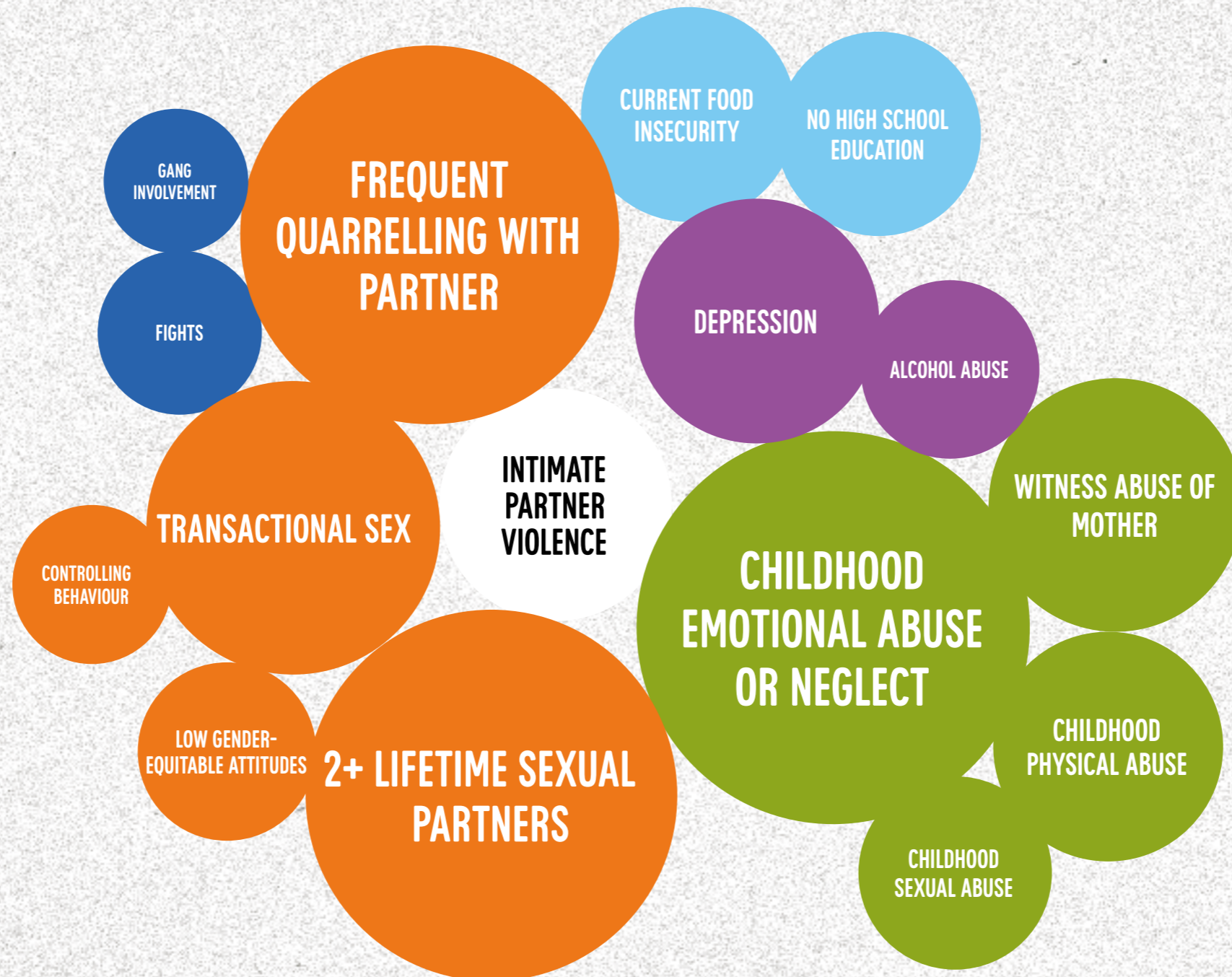
FACTORS ASSOCIATED WITH MEN'S

PERPETRATION OF INTIMATE PARTNER VIOLENCE



FACTORS ASSOCIATED WITH MEN'S

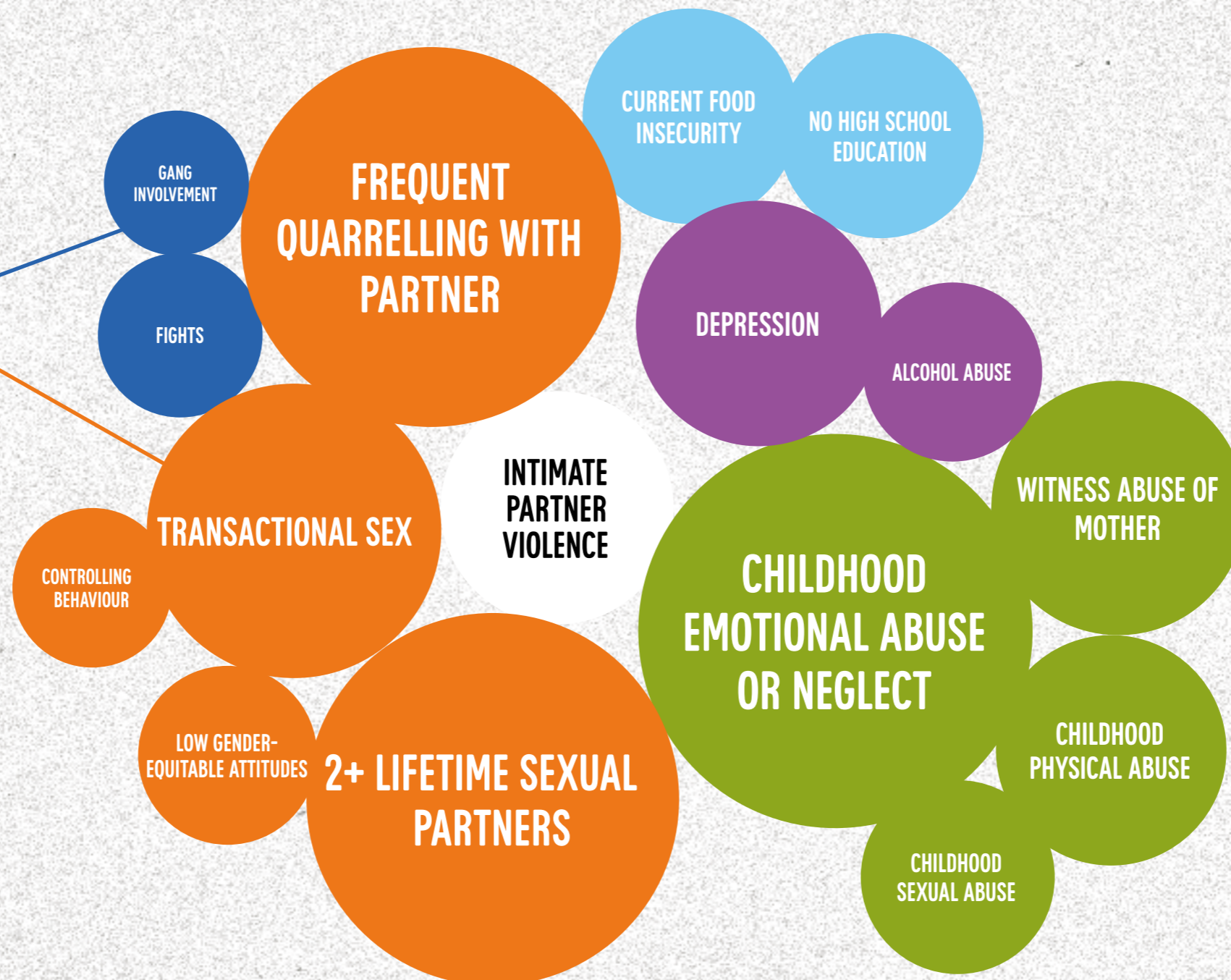
PERPETRATION OF INTIMATE PARTNER VIOLENCE



FACTORS ASSOCIATED WITH MEN'S

PERPETRATION OF INTIMATE PARTNER VIOLENCE

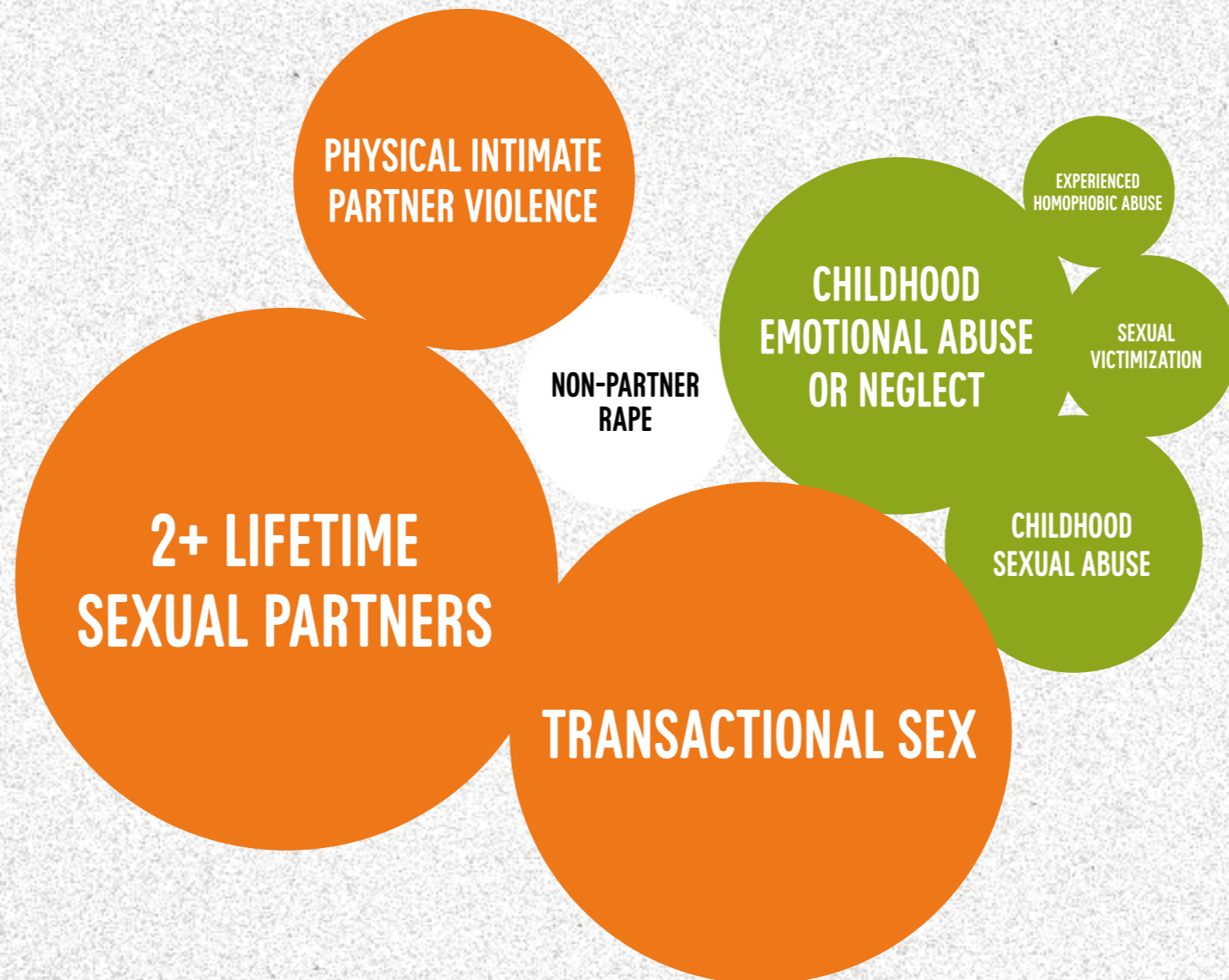
Ideals of manhood that justify and celebrate toughness, male sexual performance & dominance over women



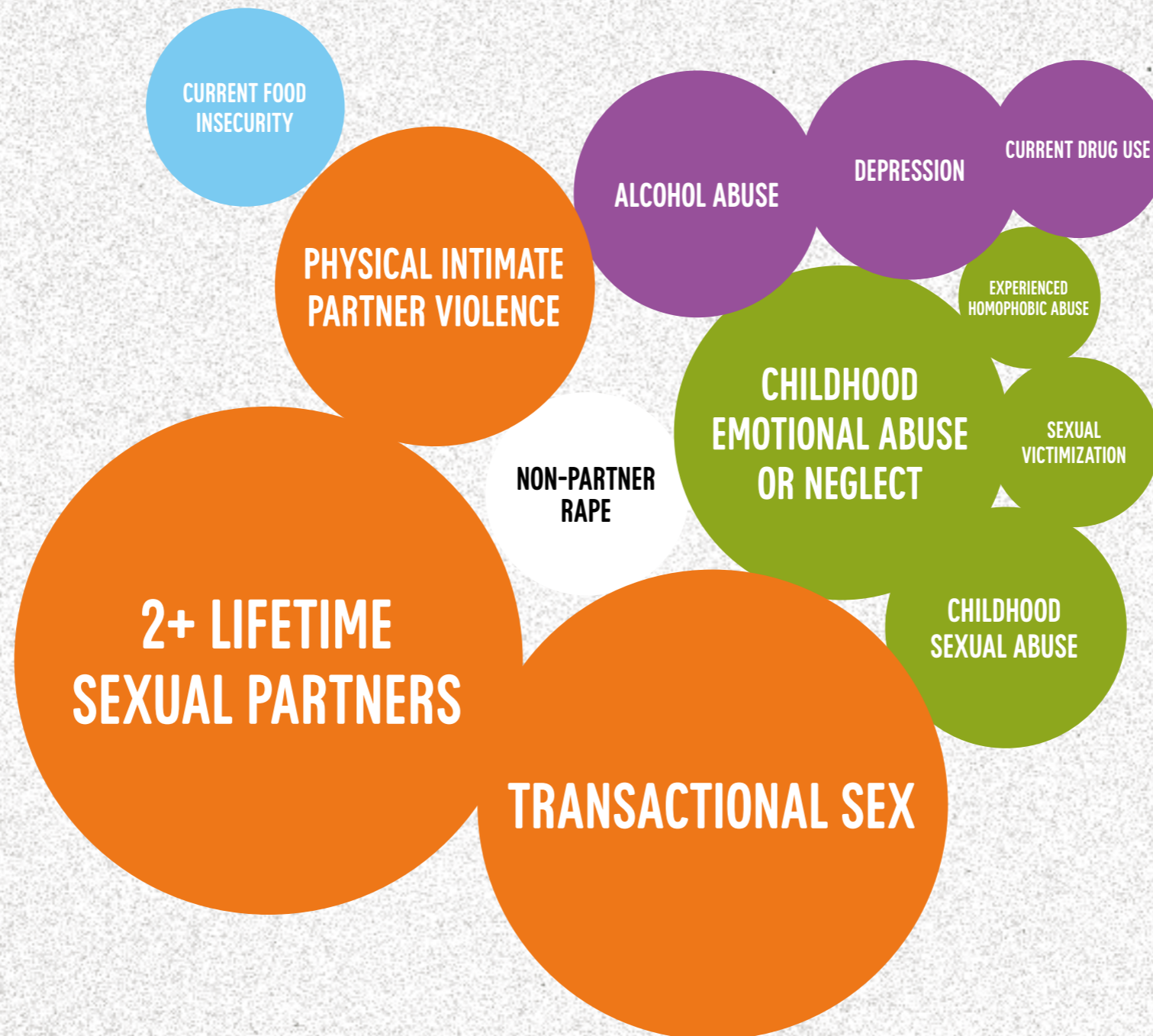
FACTORS ASSOCIATED WITH MEN'S PERPETRATION OF RAPE AGAINST A FEMALE NON-PARTNER



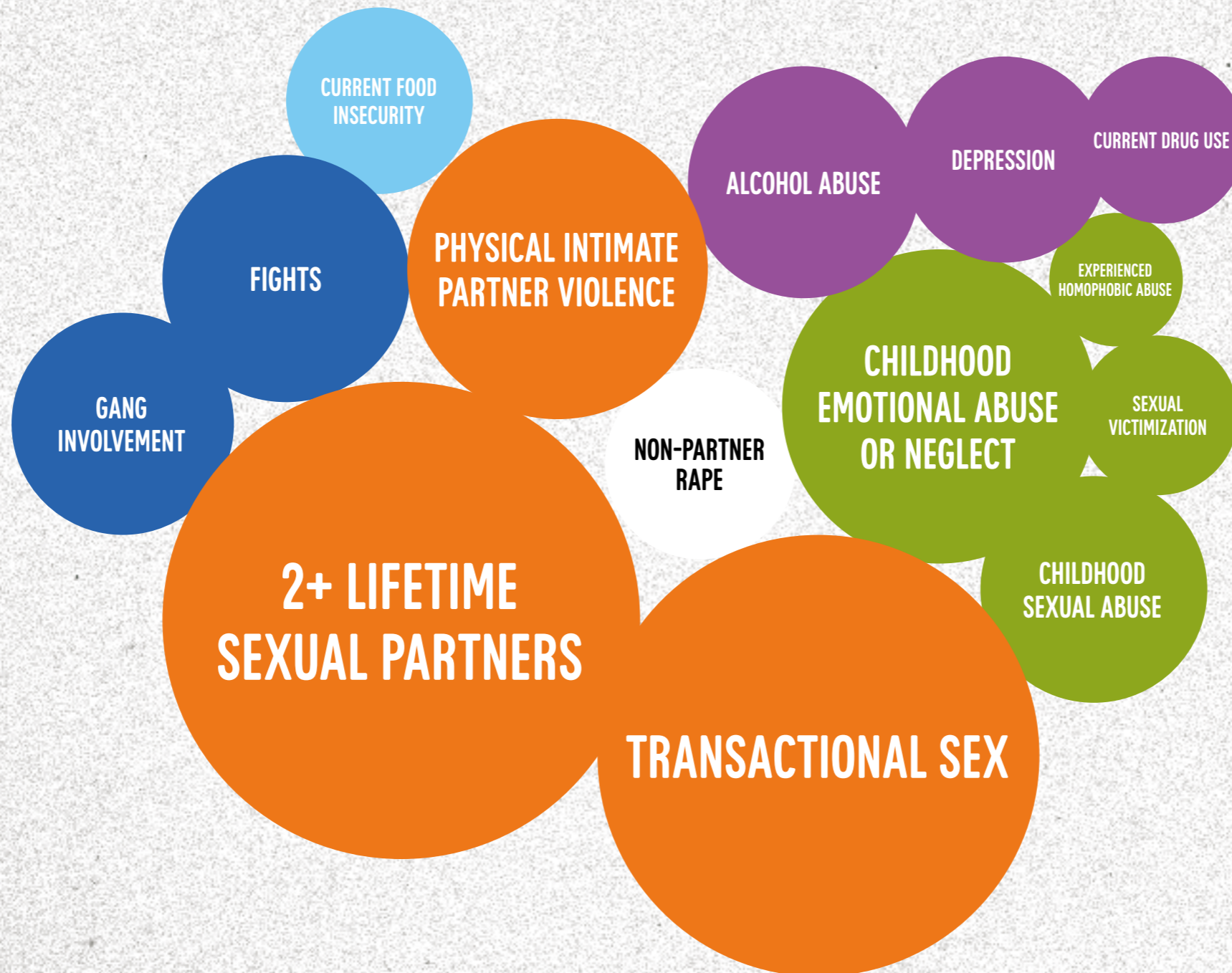
FACTORS ASSOCIATED WITH MEN'S PERPETRATION OF RAPE AGAINST A FEMALE NON-PARTNER



FACTORS ASSOCIATED WITH MEN'S PERPETRATION OF RAPE AGAINST A FEMALE NON-PARTNER



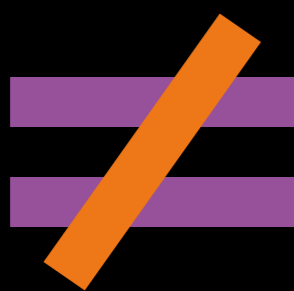
FACTORS ASSOCIATED WITH MEN'S PERPETRATION OF RAPE AGAINST A FEMALE NON-PARTNER



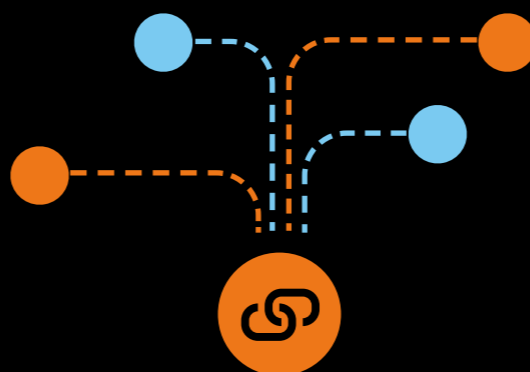
CONCLUSIONS

Violence against women is pervasive, but not all men use violence

Men's use of violence against women starts earlier than previously thought



Violence against women is fundamentally about gender inequality—most important factors are related to gender norms and relationship practices



Men's use of violence is related to ways of being a man that celebrate toughness, sexual performance and dominance over women



Men's experiences of violence, particularly as children, are strongly associated with their perpetration of violence against women

VIOLENCE IS PREVENTABLE

VIOLENCE IS PREVENTABLE

Make violence against women unacceptable and address the subordination of women

- community mobilization and engagement with cultural influencers

Address child abuse and promote healthy families

- parenting programmes, comprehensive child protection systems

End impunity for men who use violence against women, particularly marital rape

- criminalization of all forms of violence against women, access to justice

Promote non-violent and caring ways to be a man

- sustained school-based or sports-based education programmes

Educate young people to understand consent, healthy sexuality and respectful relationships

- sexual and reproductive health information and services

THANK YOU

PLEASE GO TO

WWW.PARTNERS4PREVENTION.ORG

FOR MORE INFORMATION AND TO DOWNLOAD
A FULL COPY OF THE REPORT



Violence is preventable
UNDP, UNFPA, UN Women & UNV
Asia-Pacific regional joint programme
for gender-based violence prevention