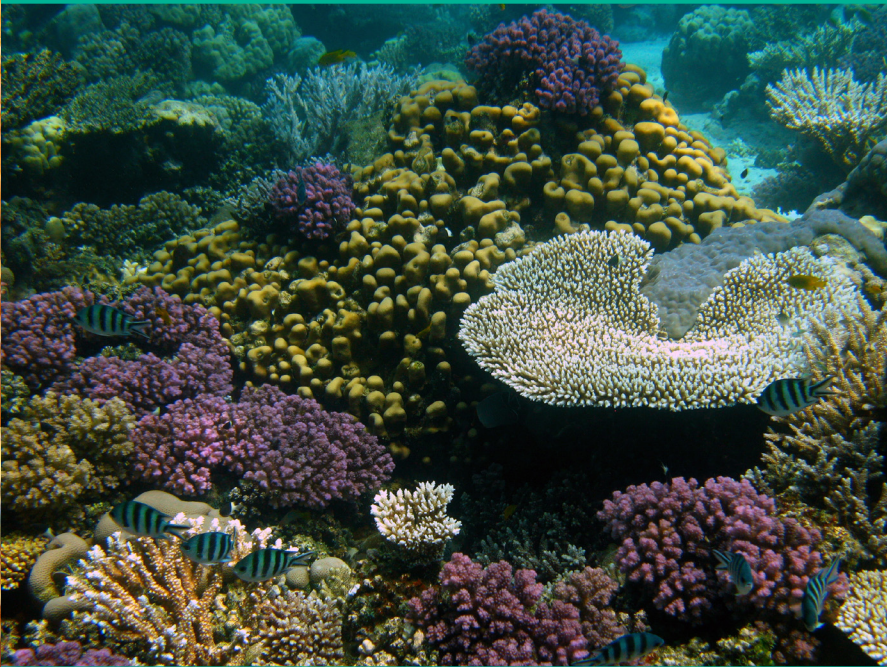




Khaled bin Sultan
Living Oceans Foundation

8181 Professional Place, Suite 215
Landover, Maryland 20785 USA
(301) 577-1288
www.livingoceansfoundation.org

Executive Director
CAPT Philip G. Renaud, USN(ret)
prenaud@livingoceansfoundation.org



GLOBAL REEF EXPEDITION

WWW.GLOBALREEFEXPEDITION.COM



Khaled bin Sultan
Living Oceans Foundation

SCIENCE WITHOUT BORDERS®



THE *GLOBAL REEF EXPEDITION* WILL EXPLORE REMOTE CORAL REEF ECOSYSTEMS AND COMPARE THEM ACROSS GRADIENTS OF BIOLOGICAL DIVERSITY, PHYSICAL AND OCEANOGRAPHIC PARAMETERS, AND ANTHROPOGENIC (HUMAN-INDUCED) STRESSORS. WORLD-RENOWNED CORAL REEF RESEARCHERS WILL HAVE THE OPPORTUNITY TO EXPLORE, MAP, AND CHARACTERIZE REEFS THAT HAVE NOT BEEN SUFFICIENTLY STUDIED.

THE KHALED BIN SULTAN LIVING OCEANS FOUNDATION WAS ESTABLISHED SEPTEMBER, 2000 IN THE UNITED STATES AS A 501(C)(3), PUBLIC BENEFIT, NON-PROFIT ORGANIZATION DEDICATED TO CONSERVING AND RESTORING LIVING OCEANS THROUGH RESEARCH, EDUCATION, AND A COMMITMENT TO *SCIENCE WITHOUT BORDERS*®.

THE LIVING OCEANS FOUNDATION'S *GLOBAL REEF EXPEDITION* WILL EXPLORE, SURVEY, AND DOCUMENT MANY OF THE WORLD'S HEALTHIEST AND REMOTE CORAL REEFS. THE EXPEDITION WILL GENERATE A MASSIVE QUANTITY OF SCIENTIFIC DATA, DESIGNED TO ADVANCE THE UNDERSTANDING OF REEFS AND PROMOTE ACTIONS THAT CAN ENHANCE CORAL REEF CONSERVATION GLOBALLY.

ALL LIFE ON EARTH IS VITALLY DEPENDENT UPON HEALTHY OCEANS. FUNCTIONAL AND RESILIENT CORAL REEFS ARE FUNDAMENTAL TO THE OCEAN'S ROLE AS A LIFE SUPPORT SYSTEM. MANY OF THE WORLD'S CORAL REEF ECOSYSTEMS ARE CRITICALLY ENDANGERED AND REQUIRE URGENT CONSERVATION ACTIONS BASED ON SOUND AND RELIABLE SCIENTIFIC DATA.



THE *GLOBAL REEF EXPEDITION* SCIENTIFIC RESEARCH PLAN IS DIFFERENTIATED FROM PREVIOUS CORAL REEF STUDIES IN THAT AN INTEGRATED, SYSTEMATIC, SCIENTIFIC RESEARCH APPROACH WILL BE EMPLOYED. BY EXPANDING UPON THE EXISTING BODY OF SCIENTIFIC KNOWLEDGE, THE EXPEDITION WILL FILL CRITICAL GAPS IN OUR UNDERSTANDING OF HOW REEFS FUNCTION AND RESPOND TO DISTURBANCE.



THE MOTOR YACHT *GOLDEN SHADOW*, A 219 FT RESEARCH VESSEL, AFFORDS THE FOUNDATION'S SCIENTISTS FULL ACCESS TO SOME OF THE WORLD'S MOST VALUABLE AND REMOTE RESEARCH SITES. THE ABILITY TO DEPLOY SUCH A STATE-OF-THE ART RESEARCH VESSEL, THROUGH THE GENEROSITY OF THE FOUNDATION'S CHAIRMAN, ALLOWS FOR UNPARALLELED OPERATIONAL EFFICIENCIES AND HIGH SCIENTIFIC RETURNS.

